

# Creekside Series

## The Shoal Creek CS-3241



### Standard Features

- Bathroom Additional Specs: Mirror Molding / Window Over Tub Master Bath
- Bathroom Shower: Fiberglass Tubs & Showers Per Print
- Additional Specs: Frost Proof Exterior Faucet / Exterior GFI Receptacle
- Exterior Wall Studs: 2 x 4 Exterior Walls
- Insulation (Floors): R-11
- Side Wall Height: 8'-0" Sidewall Height
- Dormer: Dormer Front Door Side
- Rear Door: 3476 Cottage Outswing Rear Door
- Siding: Vinyl Siding W/7/16" OSB Underlayment
- Ceiling Fans: Ceiling Fan LR
- Interior Doors: 5 Panel Int. Doors W/Mortised Hinges / Oil Rubbed Bronze Lever Door Knobs
- Kitchen Additional Specs: Lined Cabinets w/Adjustable Shelving / Hidden Cabinet Hinges / Decorative Pulls / Stainless Microwave
- Kitchen Dishwasher: Stainless Dishwasher
- Kitchen Lighting: Recessed Can Lighting T/O
- Kitchen Refrigerator: Stainless 25" SxS Refer W/Ice & Water
- Electrical Service: 200 Amp Electrical Service
- Thermostat: Digital Thermostat
- Roof Decking: 7/16" OSB Roof Decking
- Bathroom Faucets: China Lavs / Brushed Nickle Metal Faucets
- Bathroom Lighting: LED Recessed Can Lights / Recessed Can Lighting Over Tubs & Showers
- Bathroom Toilet Type: Elongated Commodes
- Insulation (Ceiling): R-21
- Exterior Wall On Center: 16" O.C.
- Floor Decking: 3/4" T&G OSB Floors
- Floor Joists: 32 Wides 2 x 8 Floor Joists (24" O.C.) / 28 Wide 2 x 6 Floor Joists (19.02" O.C.)
- Insulation (Walls): R-11
- Front Door: 3680 6-Panel Steel Front Door W/Storm
- Shingles: 3 Tab Fiberglass Shingles
- Window Type: Low E Thermopane Windows (3 Over 1)
- Ceiling Texture: Residential Light Stipple Ceiling Finish
- Molding: 3 1/4" Shaker Molding Package
- Wall Finish: 1/2" Full Finished Drywall Throughout
- Kitchen Cabinetry: 42" Eastern White Oak MDF Cabinets
- Kitchen Countertops: Solido Rolled Edge Countertops
- Kitchen Drawer Type: Metal Drawer Guides
- Kitchen Range Type: Stainless Glass Top Range
- Kitchen Sink: Double Bowl Stainless Steel Sink
- Shut Off Valves Throughout: Shut Off Valves T/O & Whole House Cut Off
- Water Heater: 50 Gallon Water Heater (Dual Element)

Due to the fact that Timber Creek Housing continuously updates and modifies its products, our brochures and literature are for illustrative purposes only. Floorplan dimensions are nominal. We reserve the right to make changes due to material changes, prices, colors specifications, features at anytime without notice or obligation. Your retailer can provide you with specific information on the home of your choice.



**Timber Creek Housing**  
674 Co Rd 65  
Bear Creek, AL 35543

(205) 642-8219  
<https://timbercreekhousing.com/>

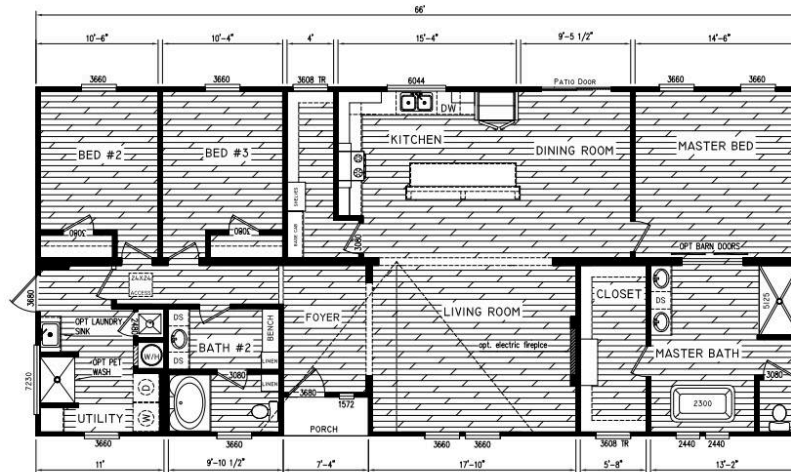
# Creekside Series

## The Shoal Creek CS-3241



### The "Shoal Creek" Model CS-3241

3 Bedrooms  
2 Baths  
1,980 SF



**3 BEDS    2 BATHS    1980 SQ. FT**

Introducing the Shoal Creek CS-3241 unveiled in Biloxi! This exquisite 3-bedroom, 2-bathroom home redefines comfort and convenience. Boasting a unique mud room complete with a pet wash, it caters to both practicality and pet-loving lifestyles. Step into the expansive master bath and immerse yourself in luxury. With its open living space, the Shoal Creek offers the perfect blend of relaxation and functionality, setting the stage for unforgettable moments in the heart of your home.



**Timber Creek Housing**  
674 Co Rd 65  
Bear Creek, AL 35543

(205) 642-8219  
<https://timbercreekhousing.com/>

