

Grand Slam

2862306GSM

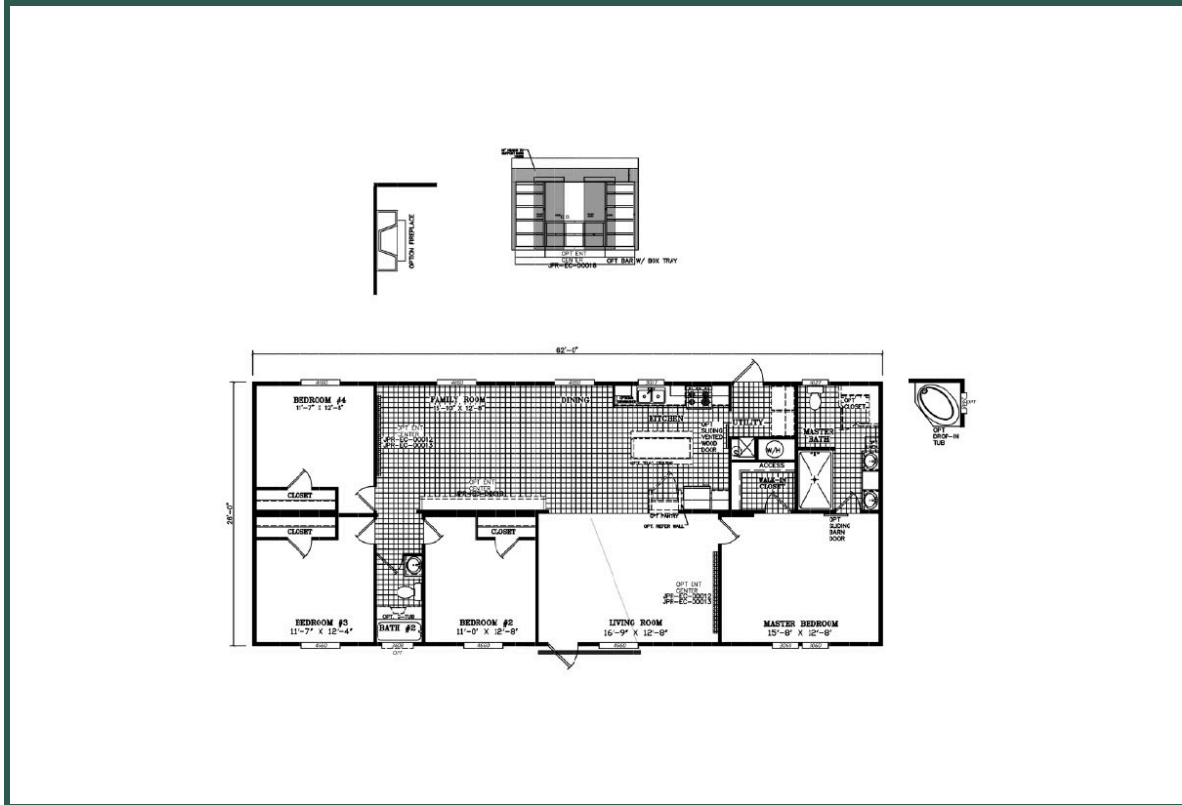
Standard Features

- Bathroom Backsplash: Formica Backsplash
- Bathroom Faucets: Faux Faucets (Metal Optional Upgrade)
- Bathroom Sink: Double Abs Lavs With Drop Down Vanity Master Bath
- Exterior Wall On Center: 16" O. C.
- Floor Decking: Tongue & Groove OSB Floors
- Floor Joists: 2x6 Floor Joists 24" O. C. (20' wide) / 2x8 Floor joists 24" O.C. (16' or 32' wide)
- Front Door: Six-Panel Steel Door With a Storm Front
- Rear Door: Slit Rear Door
- Siding: Vinyl Lap Siding
- Interior Doors: Two-Panel Colonial Doors
- Kitchen Backsplash: Formica Backsplash Thru-Out
- Kitchen Faucets: Plastic Gooseneck Faucet
- Kitchen Range Type: 30" Electric Range
- Kitchen Sink: 6" Stainless Steel Sink
- Washer Dryer Plumb Wire: Plumb for Washer-Wired For Dryer
- Bathroom Bathtubs: 54" ABS Tub/Shower in 2nd Bath
- Bathroom Shower: White 42 x 72 Argile Shower With Curtain
- Bathroom Toilet Type: Round Ceramic Commodes
- Insulation (Ceiling): R-14 Roof Insulation
- Exterior Wall Studs: 2X4 Exterior Walls
- Insulation (Floors): R-11 Floor Insulation
- Side Wall Height: 8' Sidewall Height
- Insulation (Walls): R-11 Walls Insulation
- Exterior Lighting: Exterior Lights At All Entrances
- Shingles: 25-Year 3-Tab Shingles / Nailed Shingle Application
- Window Type: 1 Over 1 Thermopane Windows
- Interior Lighting: 2 Bulb Lights With Plastic Covers
- Kitchen Countertops: Formica Countertops
- Kitchen Range Hood: Black 30" Range Hood
- Kitchen Refrigerator: 18 C.F. Refrigerator-NO ICE
- Electrical Service: 200 Amp Service
- Water Heater: 30-Gal. Electric Water Heater

Due to the fact that Champion Homes of Georgia continuously updates and modifies its products, our brochures and literature are for illustrative purposes only. Floorplan dimensions are nominal. We reserve the right to make changes due to material changes, prices, colors specifications, features at anytime without notice or obligation. Your retailer can provide you with specific information on the home of your choice.

Grand Slam

2862306GSM



4 BEDS 2 BATHS 1612 SQ. FT

The Grand Slam/2862306GSM by ScotBilt Homes embodies spacious elegance with 4 bedrooms, 2 bathrooms, and 1612 square feet. Its well-appointed layout seamlessly integrates living and dining areas, fostering a sense of openness. The kitchen, equipped with modern amenities, is a chef's dream. Retreat to the serene bedrooms for rest and rejuvenation. With its meticulous craftsmanship and contemporary design, The 2862306GSM model redefines comfortable living.

