

Floor Plan: The Perry 28764C

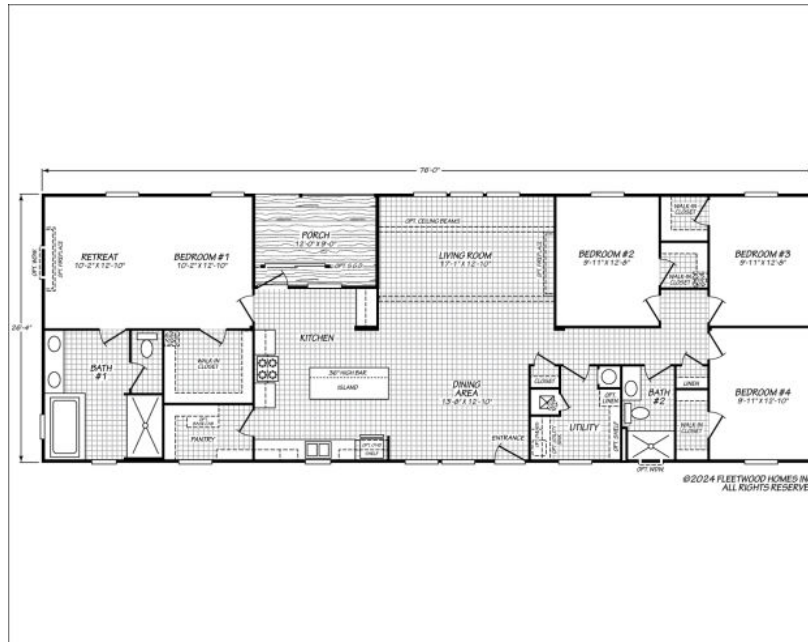
4 Bedrooms, 2 Bathrooms, 1919 Square Feet

Series: Pinnacle | Type: Manufactured | Sections: Double-wide

SCAN FOR
MORE DETAILS



FLOOR PLAN



Because we have a continuous product updating and improvement process, prices, plans, dimensions, features, materials, specifications and availability are subject to change without notice or obligation. Please refer to working drawings for actual dimensions. Renderings and floor plans are artist's depictions only and may vary from the completed home. Square footage calculations and room dimensions are approximate subject to industry standards. Some features shown are optional.

*Pricing information is provided for informational purposes only, actual prices may vary and may only be obtained from your retail dealer. Pricing does not include taxes, site preparation costs beyond the services listed or delivery outside of the stated delivery area. Nothing contained herein or on the Web Site constitutes an offer to sell any product or service, and no binding obligations will arise until you and your retail model center have executed final sales documents. We reserve the right to change prices at any time and without notice or obligation. Not responsible for typos. Please contact the retailer to confirm the most current price.

Fleetwood Homes

1515 Kellogg Drive
Douglas, GA 31533



fleetwoodhomes.com

Copyright © 2025 Cavco Industries, Inc. All rights reserved.

Floor Plan: The Perry 28764C

4 Bedrooms, 2 Bathrooms, 1919 Square Feet

Series: Pinnacle | Type: Manufactured | Sections: Double-wide

**SCAN FOR
MORE DETAILS**



PHOTOS AND RENDERINGS



Scan QR Code above for more photos and renderings.

Fleetwood Homes

1515 Kellogg Drive



fleetwoodhomes.com

Copyright © 2025 Cavco Industries, Inc. All rights reserved.

Douglas, GA 31533